

I T H A K A

JSTOR | PORTICO | ITHAKA S+R

The Print-to-Electronic Transition: Faculty Attitudes & Behaviors

Ross Housewright

ITHAKA is a not-for-profit organization dedicated to helping the academic community take full advantage of rapidly advancing information and networking technologies. We serve scholars, researchers, and students by providing the content, tools, and services needed to preserve the scholarly record and to advance research and teaching in sustainable ways. We are committed to working in collaboration with other organizations to maximize benefits to our stakeholders.





- **Ithaka S+R** works with initiatives and organizations to develop sustainable business models and conducts research and analysis on the impact of digital media on the academic community as a whole.



- **JSTOR** helps scholars, researchers, and students discover, use, and build upon a wide range of content in a trusted digital archive of over 1,000 academic journals and other content. JSTOR uses information technology and tools to increase productivity and facilitate new forms of scholarship.

- **Portico** preserves scholarly literature published in electronic form—more than 10,000 e-journals and 28,000 e-books—and ensures that these materials remains accessible to future scholars, researchers, and students.



- Thought leadership:

Scholarly community practices & attitudes	Sustainability of online academic & cultural resources	University publishing	The changing academic library
<p>Ithaka's 2006 Studies of Key Stakeholders in the Digital Transformation in Higher Education</p> <p>Faculty Survey 2009: Key Strategic Insights for Libraries, Publishers, and Societies</p>	<p>Sustaining Digital Resources: An On-the-Ground View of Projects Today</p>	<p>University Publishing for the Digital Age</p> <p>Unlocking the Gates: How and Why Leading Universities are Opening Up Access to Their Courses</p>	<p>What to Withdraw: Print Collections Management in the Wake of Digitization</p> <p>Documents for a Digital Democracy: A Model for the Federal Depository Library Program in the 21st Century</p>

- Consulting

I T H A K A

JSTOR | PORTICO | ITHAKA S+R

Faculty Attitudes in the Digital Age

Ross Housewright

About the faculty study

- “Faculty Survey 2009: Key Strategic Insights for Libraries, Publishers, and Societies” will be released April 7th, via <http://www.ithaka.org>
- **Chapter 1: Discovery and the Evolving Role of the Library**
 - Basic scholarly information use practices have shifted rapidly in recent years, and as a result the academic library is increasingly being disintermediated from the discovery process, risking irrelevance in one of its core functional areas
- **Chapter 2: The Format Transition for Scholarly Works**
 - Faculty members’ growing comfort relying exclusively on digital versions of scholarly materials opens new opportunities for libraries, new business models for publishers, and new challenges for preservation
- **Chapter 3: Scholarly Communications**
 - Despite several years of sustained efforts by publishers, scholarly societies, libraries, faculty members, and others to reform various aspects of the scholarly communications system, a fundamentally conservative set of faculty attitudes continues to impede systematic change

- Background & methodology
- The print-to-electronic transition for current issues
- The print-to-electronic transition for backfiles

I T H A K A

JSTOR | PORTICO | ITHAKA S+R

Background & Methodology

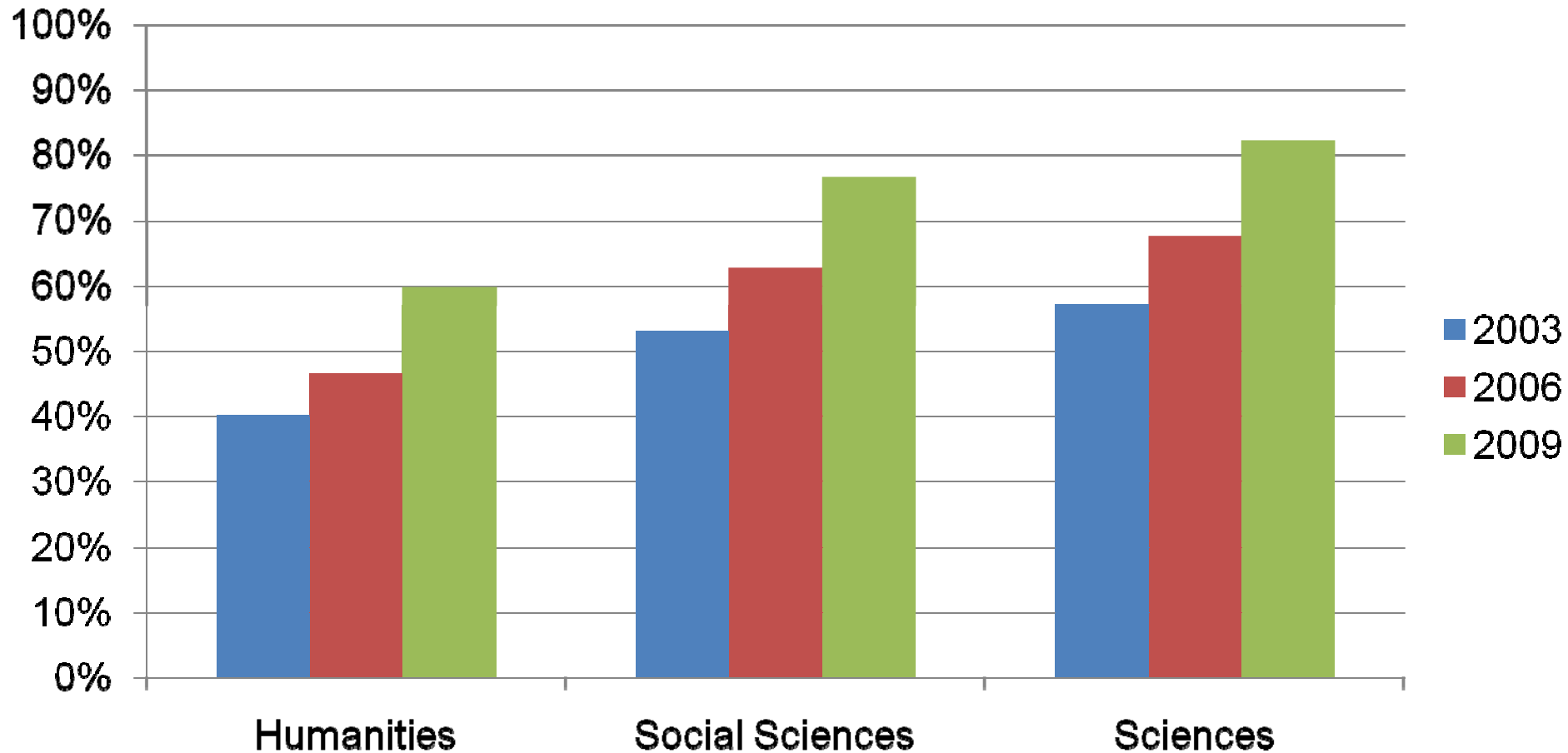
- Findings come from Ithaka S+R's 2009 survey of U.S. faculty members, which builds upon previous studies conducted in 2000, 2003, and 2006.
- Findings are based on about 3,000 survey responses from faculty members at U.S. 4-year colleges and universities

I T H A K A

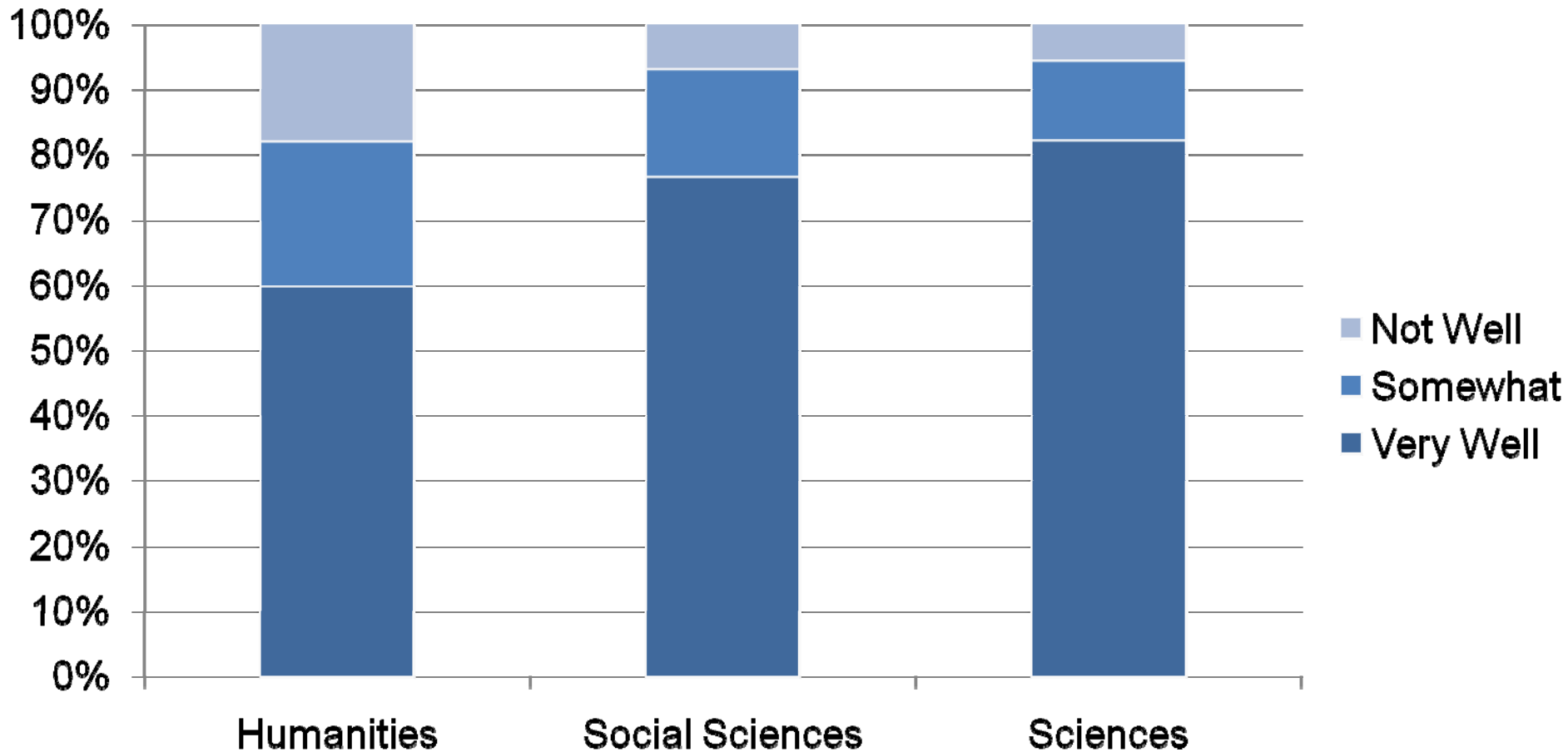
JSTOR | PORTICO | ITHAKA S+R

The print-to-electronic transition for current issues of journals

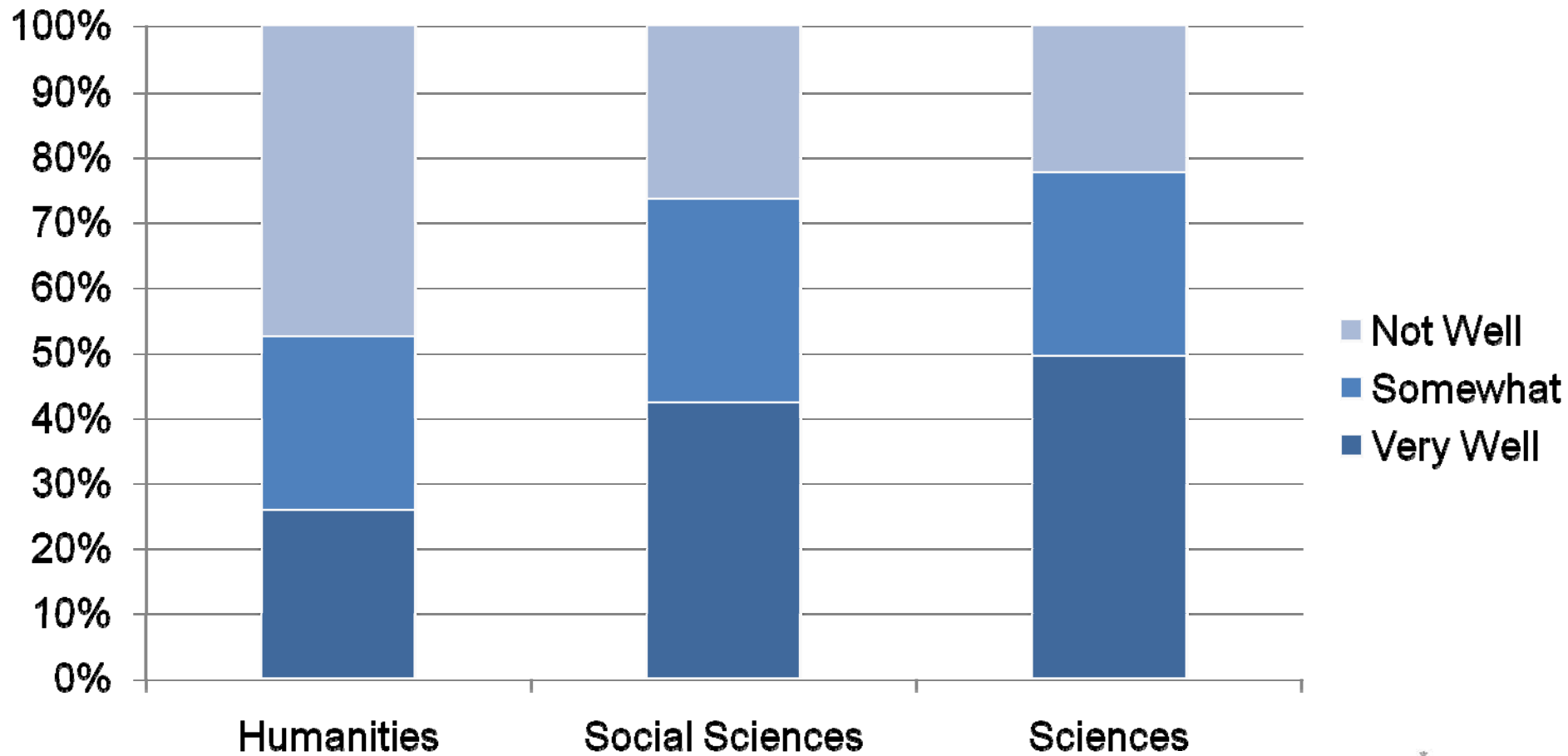
“If my library cancelled the current issues of a print version of a journal but continued to make them available electronically, that would be fine with me”



“If my library cancelled the current issues of a print version of a journal but continued to make them available electronically, that would be fine with me”



“I am completely comfortable with journals I use regularly ceasing print versions and publishing in electronic-only form”

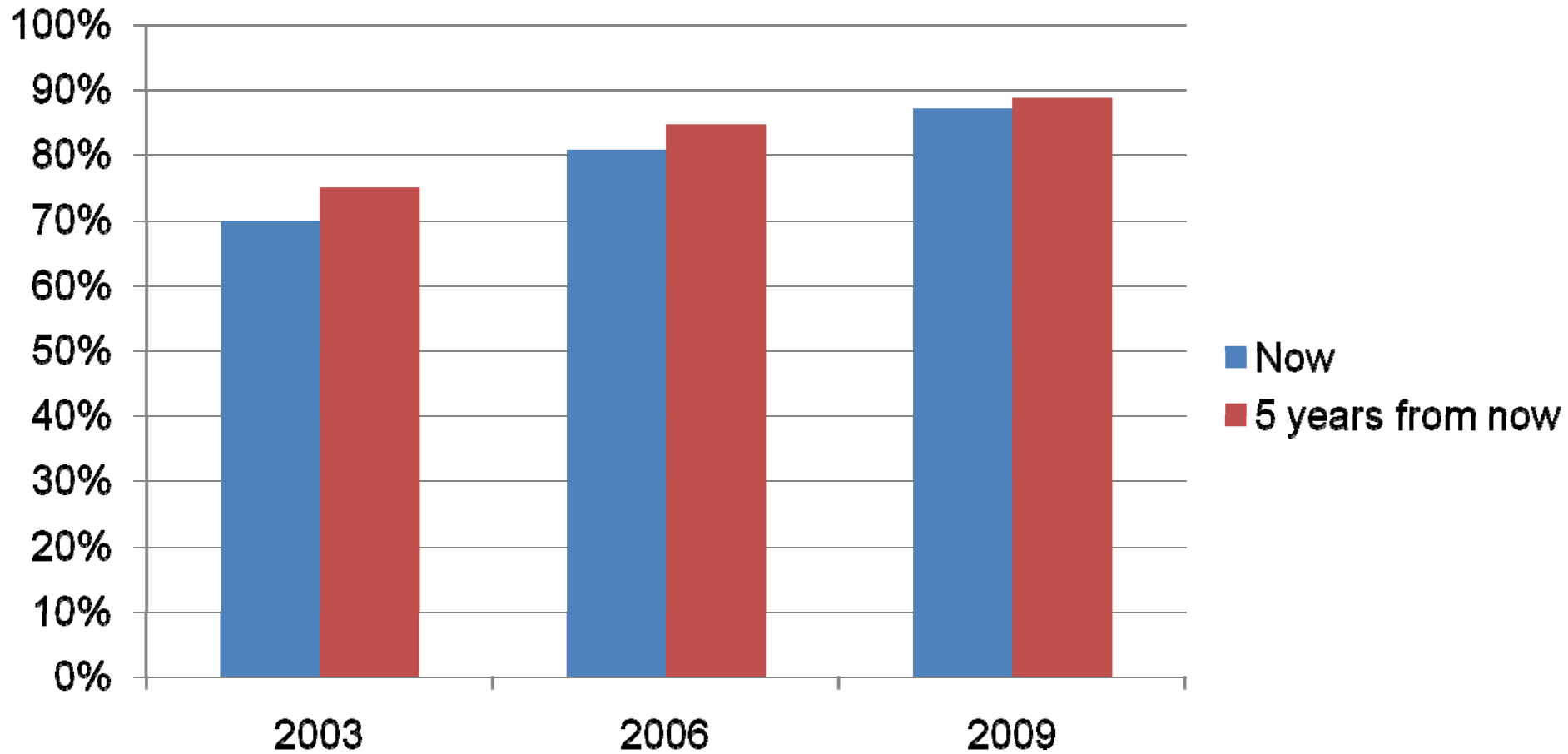


I T H A K A

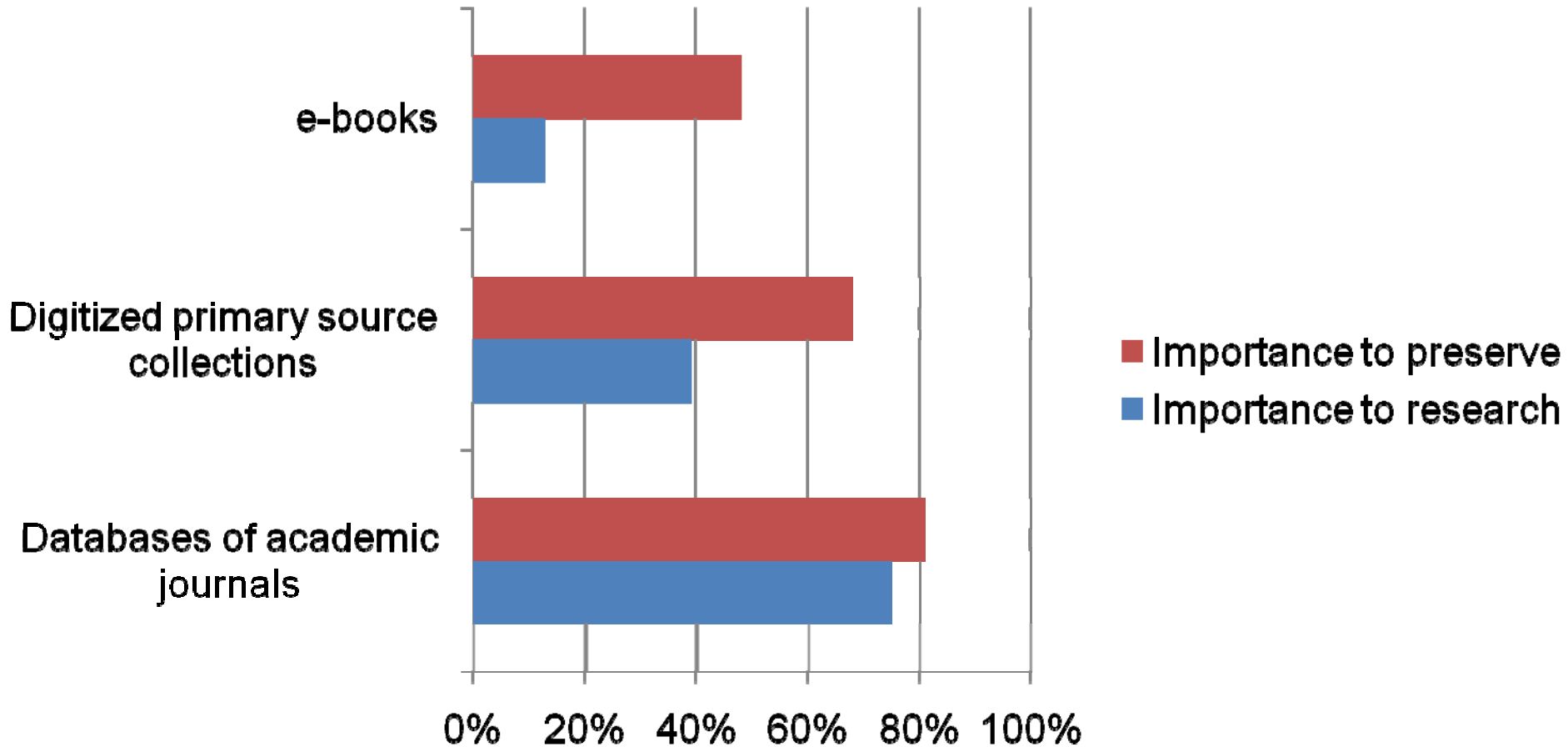
JSTOR | PORTICO | ITHAKA S+R

The print-to-electronic transition for journal backfiles

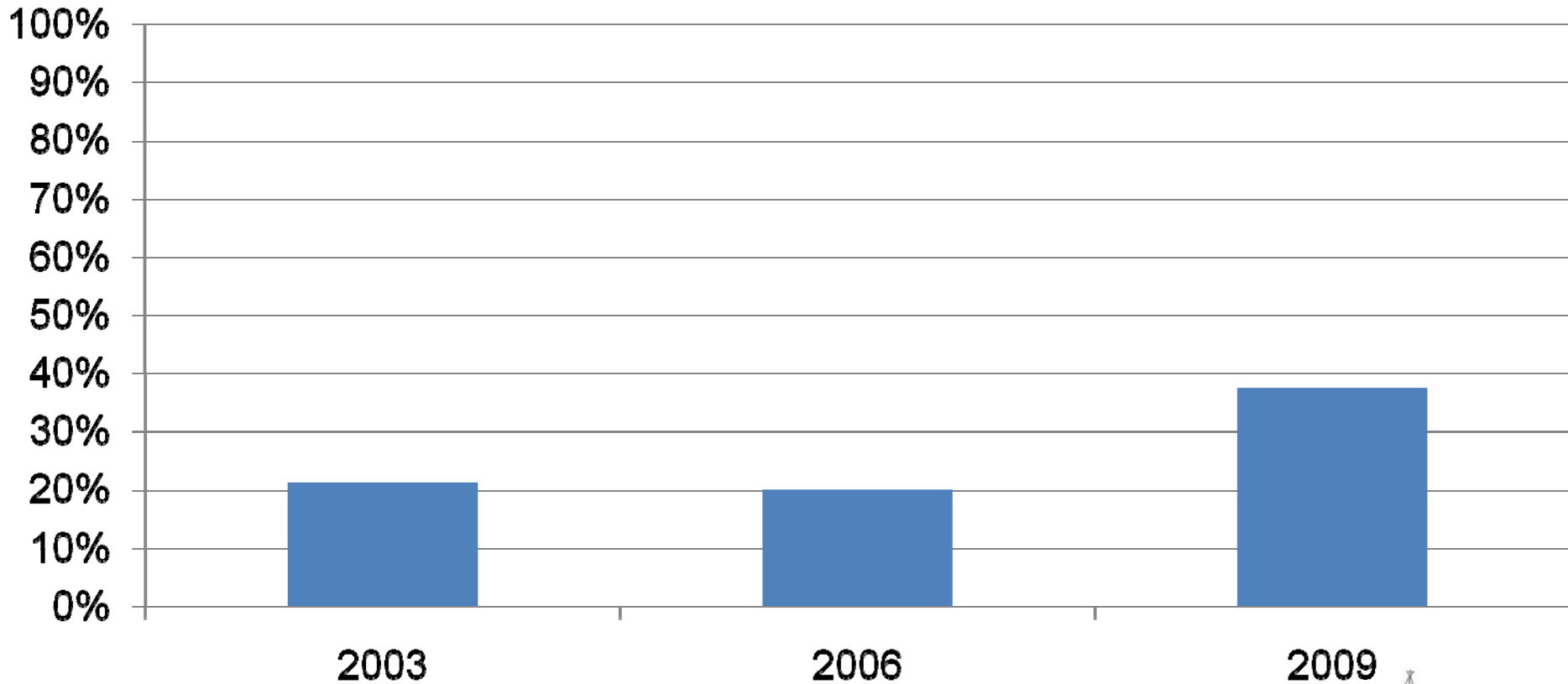
“How important is the long term preservation of electronic journals to you?”



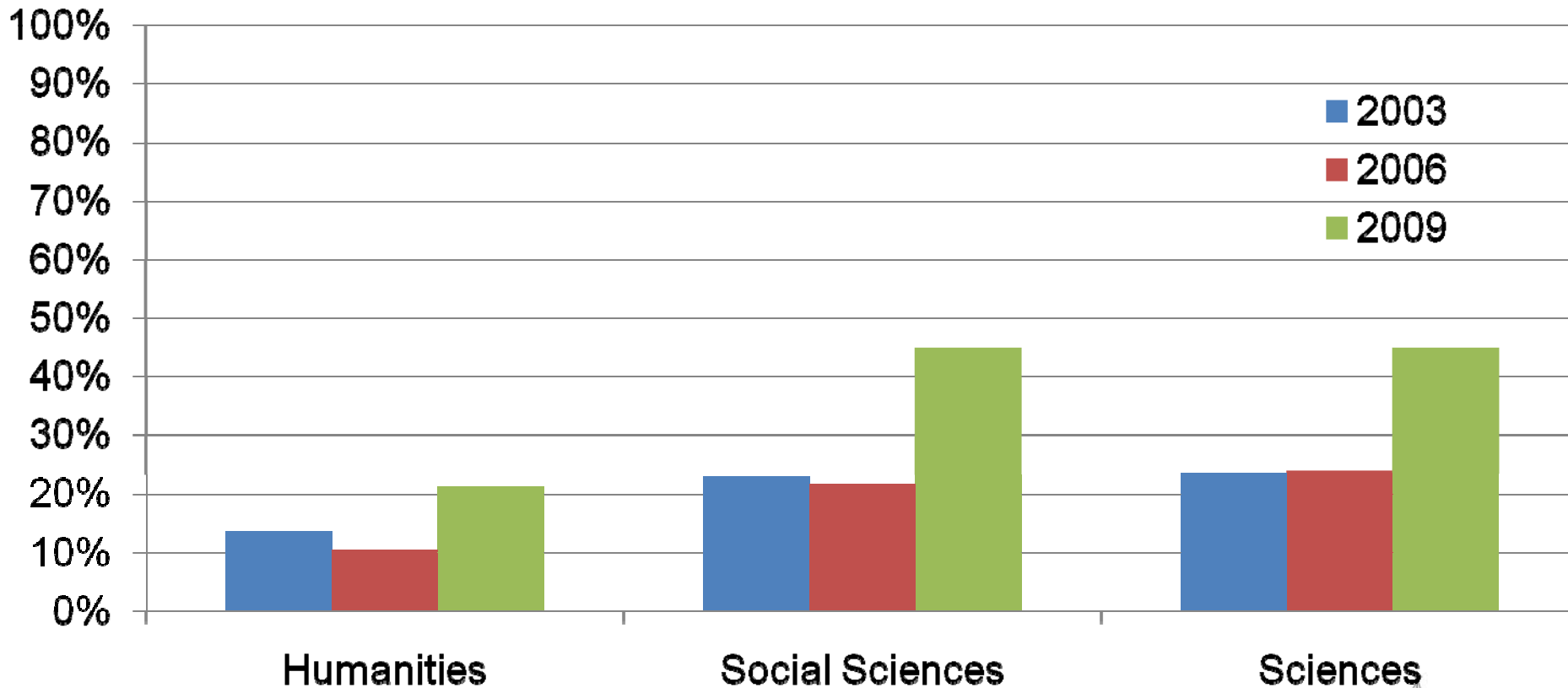
“How important is the long term preservation of electronic journals to you?”



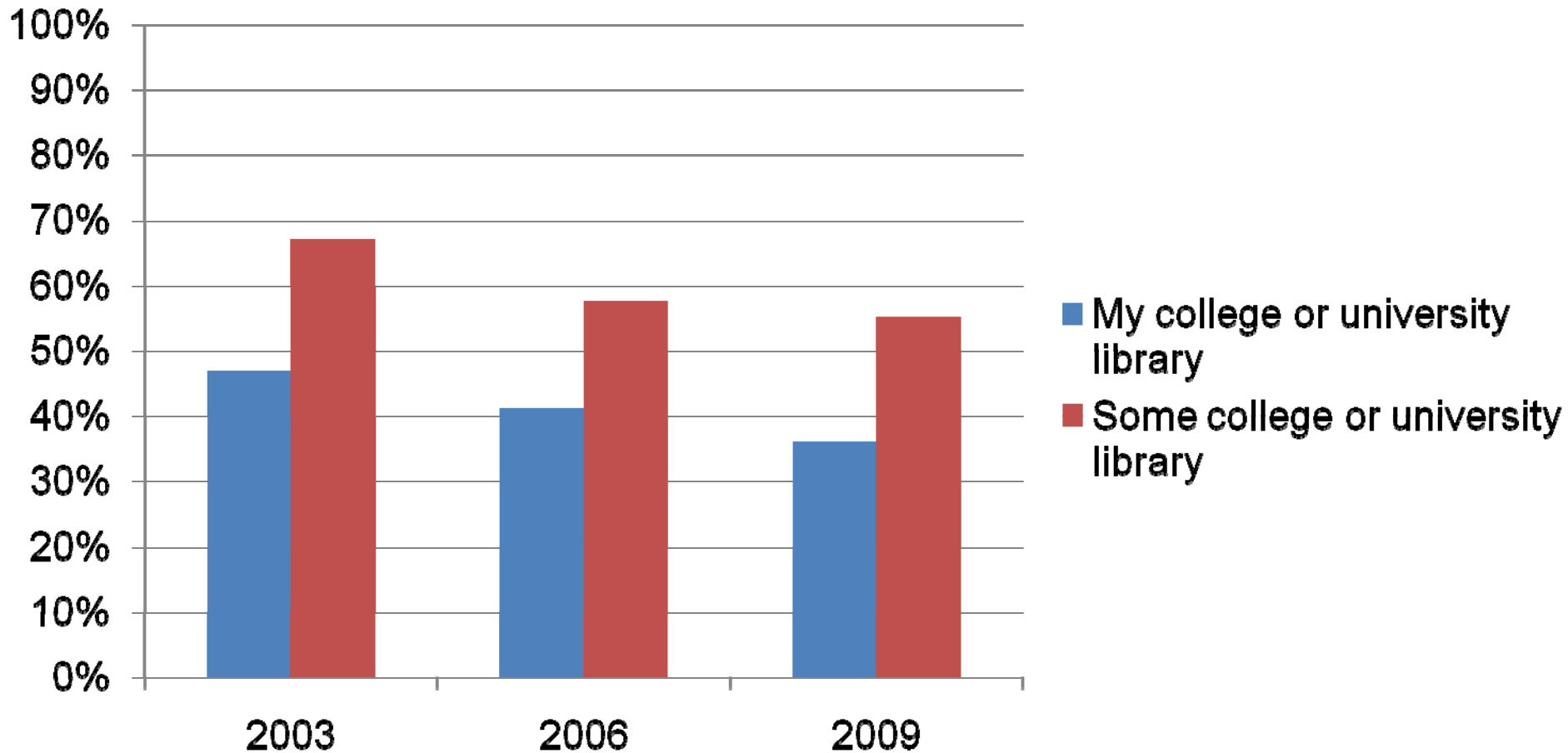
Assuming that electronic collections of journals are proven to work well and are readily accessible, I would be happy to see hard-copy collections discarded and replaced entirely by electronic collections



Assuming that electronic collections of journals are proven to work well and are readily accessible, I would be happy to see hard-copy collections discarded and replaced entirely by electronic collections



“Regardless of how reliable and safe electronic collections of journals are, it will always be crucial for _____ to maintain hard-copy collections of journals”



- Libraries:
 - What has been your experience with local print-to-electronic transitions for current issues? Back issues?
 - What challenges have you encountered, and how have you overcome them?
- Publishers:
 - Have you been able to realize savings by drawing down on print production of current issues? How have your readers reacted?

I T H A K A

JSTOR | PORTICO | ITHAKA S+R

The Print-to-Electronic Transition: What to Withdraw

Ross Housewright

- Background
- What to Withdraw framework
- What to Withdraw Decision-Support Tool
- Discussion

- As an increasingly greater share of collections is digitized, libraries face growing pressure to reduce the size of their corresponding print collections
- But it may be important to keep at least some print copies on behalf of the library community, even if not locally
- The need for remaining print preservation is poorly understood, the responsibility for it is often unclear, and libraries lack nuanced information about print preservation activities elsewhere
- As a result, any given library is unable to identify those materials that are sufficiently well-preserved elsewhere that the local copy is not needed for community preservation needs

What to Withdraw: Vision

- Our objective is to provide information about community-wide preservation needs and activities that can assist library decision-making processes
- The What to Withdraw framework applies to general collections of published scholarly journals – it does not apply to monographs, rare books, newspapers, journals that have been categorized as special collections, or any other collections or format types
- We are not advising any individual library that it should, or should not, retain or withdraw, any of its holdings

I T H A K A

JSTOR | PORTICO | ITHAKA S+R

What to Withdraw Framework

What to Withdraw Framework: Overview

- Define rationales for print preservation in the presence of digitized surrogate
- Based on these rationales, categorize journals according to their relative preservation needs
- Develop system-wide print preservation goals for each category
- Determine the levels of print preservation required for each goal

What to Withdraw: Rationales for Print Preservation

Rationales that are relevant for the whole community

- Fix scanning errors
- Inadequate scanning standards & practices
- Inadequate digital preservation
- Unreliable access

- Scholarly needs
- Campus politics

Additional rationales that apply at the local level

What to Withdraw: Examples of Categories

	Ideal Scenario	Inadequate Digital Preservation	Image Intensive	Inadequate Digitization
High digitization quality standards?	Yes	Yes	Yes	No
Active error-correction?	Yes	Yes	Yes	Yes
Reliable digital preservation?	Yes	No	Yes	Yes
Image intensive?	No	No	Yes	No
Reliable terms?	Yes	Yes	Yes	Yes
Minimum time horizon for retention of some copies system-wide	20 years; and a candidate for local withdrawal	n/a	n/a	100 years; and may not be a candidate for withdrawal at research libraries

What to Withdraw: Model

- Ithaka S+R commissioned Candace Yano, operations researcher at UC Berkeley, to develop a model for how many copies are needed to meet these preservation goals
- Assumption that dark archives have an annual “loss rate” of 0.1%

What to Withdraw: Model

- Ithaka S+R commissioned Candace Yano, operations researcher at UC Berkeley, to develop a model for how many copies are needed to meet these preservation goals
- Assumption that dark archives have an annual “loss rate” of 0.1%

Scenario	Time Horizon	Probability of Success	Number of “Perfect,” Uncirculating Copies Required
Ideal Scenario	20	>99%	2

I T H A K A

JSTOR | PORTICO | ITHAKA S+R

**What to Withdraw:
Decision-Support Tool –
Proof of Concept**

What to Withdraw: Immediate Opportunities

- JSTOR-digitized titles offer an easy opportunity to apply this model in the short term:
 - Widely agreed to be of high quality and reliability, digitally preserved
 - Two page-validated dim to dark archives (at Harvard and UC)
 - Widely held at libraries
 - Easy access to relevant data
- We have developed a tool to provide libraries with additional information about preservation status of JSTOR-digitized titles to support print collections management decisions by identifying titles which:
 - Have relatively few images
 - Are relatively completely held in both Harvard and UC archives

Variables

Percent of a title's complete run (measured at the issue level) that must be held in a page-verified dark archive to be considered sufficiently close to "complete" to meet withdrawal thresholds:	90%
Number of page-verified copies of complete run of a title (at the above level of "completeness") required to meet withdrawal thresholds:	2
Threshold for image-to-page ratio (across a title's complete run, as a percentage) below which a title will meet withdrawal thresholds:	5%
Please identify JSTOR collections in which your institution participates:	
Arts & Sciences I	Yes
Arts & Sciences II	Yes
Arts & Sciences III	Yes
Arts & Sciences IV	Yes
Arts & Sciences V	Yes
Arts & Sciences VI	No
Arts & Sciences VII	No
Arts & Sciences VIII	No
Biological Sciences	No
Business	Yes
Business II	No
Ecology & Botany	Yes
Health & General Sciences	No
Ireland	No
Language & Literature	No
Life Sciences	No
Mathematics & Statistics	No
Music	No
How many of the total set of JSTOR-digitized titles meet these criteria?	402
How many of these titles do I currently have access to through JSTOR?	345
(See Titles tab for complete details)	



Titles Listing

ISSN	Title	Passes image criteria?	Passes holdings criteria?	Passes all criteria?	Subscribed?	Actionable?
0001-4273	The Academy of Management Journal	Yes	No	No	Yes	No
0001-4826	The Accounting Review	Yes	Yes	Yes	Yes	Yes
0001-6241	Acta Musicologica	Yes	Yes	Yes	Yes	Yes
0001-6993	Acta Sociologica	Yes	No	No	No	No
0001-8392	Administrative Science Quarterly	Yes	Yes	Yes	Yes	Yes
0001-8678	Advances in Applied Probability	Yes	Yes	Yes	No	No
0001-9720	Africa: Journal of the International African Institute	Yes	Yes	Yes	No	No
0001-9887	Africa Today	Yes	No	No	No	No
0001-9909	African Affairs	Yes	Yes	Yes	Yes	Yes
0001-9933	African Arts	No	No	No	No	No
0001-9992	African Historical Studies	Yes	No	No	Yes	No
0002-0206	African Studies Review	Yes	Yes	Yes	Yes	Yes



What This List Is (And Is Not)

- This list can help a library to identify titles that match criteria set by the library, identifying potential easy opportunities for withdrawals
- This list is **not** a picklist for a withdrawal project; any library may appropriately choose to locally maintain any or all of the items this tool identified because of other needs or priorities
- This list can provide one new source of information into a decision-making process; it cannot substitute for that process

- The What to Withdraw framework was released in the fall
- ASERL publicly endorsed it in December
- The decision-support tool was released in mid January, and updated data will be released in the near future
- Ithaka S+R staff have conducted presentations and webinars on the framework and tool with more on the way
- Numerous libraries have downloaded the decision-support tool and are beginning to make use of it in their decision-making
- There is significant demand among libraries for us to expand the tool to incorporate many more journal titles

- The framework would be further developed to
 - support volume and / or issue validation, allowing numerous additional print repositories to participate
 - move beyond the “ideal scenario” to incorporate a greater range of quality paradigms
- The tool would be also be further developed to incorporate
 - holdings and condition data from additional print repositories
 - digitization quality information and digital preservation status of thousands more journals
- In addition we hope to further develop the tool itself to
 - support consortial-driven planning
 - interact more readily with local systems

Benefits and considerations

- Coverage expanded to 8,000-10,000 titles, or more than 10 linear miles of shelving
- Libraries would achieve significant space-saving opportunities
- Preservation of these materials would be assured
- Print repositories would be able to develop with greater efficiency and effectiveness

What to Withdraw: Further Information

- What to Withdraw report, decision-support tool, and information about upcoming webinars can be found at <http://www.ithaka.org/ithaka-s-r/research/what-to-withdraw>
- Our recent report on the transition facing federal government information can be found at <http://www.ithaka.org/ithaka-s-r/research/documents-for-a-digital-democracy>
- For more information or questions, please contact Ross Housewright, ross.housewright@ithaka.org

- How could this sort of a tool be made most valuable for you in your local decision-making?
- How can the library *communicate* a carefully thought out print backfiles transition to its constituents to gain community support?

I T H A K A

JSTOR | PORTICO | ITHAKA S+R

Thank you!

Ross Housewright
ross.housewright@ithaka.org